



:



&

2007

АНЕКДОТИЧЕСКАЯ

&

2007.

ПАВЕЛЪ ИМО ПЕРВА

«

&

»

ПАВЕТЪТЪМО РЕПАА

ПАВЕЛЪ ИМО РЕПАА

_____:		&	
		í í í í í ...í í í í í	30
_____7:	í í í í í í í í í í í í í í í	..í í í í í í í í í	30
_____8:	í í í í í í í í í í í í	.í í í í í 32
8.1	ó	í í í í í í í í í í í í	...í í í í ..32
8.2			:
	(e-Health)	í í í í í í í í í í í í	..í í í í í í 38
8.3	21	í í í í í í í í í í	.í í í í í 41
8.4	í í í í í í í í í í	í í í í í 42
8.5	í í í í í í	..í í í 44
8.6	í í í í í í	...í í í í 45
8.7	í í í í í í í	.í í í í 46
8.8			í í ...í í í í 47
8.9			. . í í í í í í í 50
_____9:	í í í í í	...í í í í í í í í í í í í	..í í í í 54
9.1		í í í í í í í í í í í í	..í í í í í 54
9.2		í í í í í í í	..í í í í í 56
_____10:		í í í í	..í í í í í í 57
10.1		í í í í í í í	..í í í í 58
10.2		í í í í í í í í	...í í í í í 59
10.3		í í í í í	...í í í 59
10.4		í í í í í	.í í 61
10.5		í í í í í í í í í í í í	.í í í 64
10.6		í í í í í í í í í í í í í í í í	..í í í í 65
10.7			í ..í í 67
10.8			í í í í í í í 68
10.9		í í í í í í í í í í í í í í	í í í í 68
10.10		í í í í í í í í í	.í í í 69
10.11		í í í í í í í	...í í í í í 70

_____ : & í í í í ..í .72

_____ 11: í í í í í í í í í í ...í í í .72

_____ 12: í í í í í í í í í í ..í í í í .72

_____ 13: í í í ..í 75

_____ 14: í í í ..í í ...78

_____ 15: í í í ..í í ...í í 81

_____ 16: K
í .í í í í í 82

_____ 17: í í í ..í 83

_____ 18: í í í ...í 104

_____ IV: & í í í í í í í í í ..í í í 108

_____ 19: í í í í í í í í í í í í í í ...í í í ..í í 108

_____ 20: í í í í í í í í í í í í í í ..í í í í í í ..í í 112

(8.1): í í í í í í í í í í .í í í í .34

(8.2): í í í í í í ...í .34

(8.3): e-Healthí í í í í í í í í ...í í 39

(8.4): í í í í í í í í í í í í í í ..í í í .48

(8.5): e-Healthí í í .í .50

(9.1): í í í í í í í í í í í í .55

(10.1): í í í í í í í í .í í ..57

(17.1): :
ó ó í í í í í ..í í í í ..84

(17.2): :
ó í í í í í í í .85

(17.3): :
ó ó í í í í í í í í .í í í í í í 86

(17.4): :
ó ó í í í í .í í 87

(17.5): :
í í í í í í í í í .88

(17.6): :
í í í í í í í í í í í í í í 93

(17.7): :
í í í í í í í í í í ...í í í í 94

(17.8): :
ó í í í í í í í í .í í í í 95

(7.1): í í í í í í í í í í í 32

(8.1): . . .
í 37

(8.2): . . .
í 38

(8.3): . . í í í í í í í í í í í í í í í í í í í 45

(10.1): í í í ...66

(12.1): ó ó í í í í í .í í 74

(13.1):
í 75

(14.1): í í í ...í í í í 78

(15.1): í í í í í í í í í 81

(16.1):
í í í í í í í í í í í í í í í í í í .í í 83

(17.1): :
ó (e-mail)í í í í í .í í 85

(17.2): :
ó í í í í í í í í í .í í í í í 87

(17.3): :
í í í í í í ...í í í í 89

(17.4): :
í í í í í í í í í í í í í í .í í í í 90

(17.5): :
í í í í í í í í í í í í .í í í í í í 90

- (17.6): :
í í í í í í í í í í í í í í í í í .91
- (17.7): :
í í í í í í í í í í í í í .92
- (17.8): :
í .í í í í 92
- (17.9): :
í í í í í í í í í í í í í í í í í ...í í í .96
- (17.10): :
í í í í í í í í í í í í í í í í 96
- (17.11): :
í í í í í í í í í í í í í í í í ...í í í 97
- (17.12): :
í í í í í í í í í í í í í í í í í í 98
- (17.13): :
í í í í í í í í í í í í í í í í í ..í í 98
- (17.14): :
í í í í í í í í í í í í í í í í ...í í í í 99
- (17.15): :
í í í í í í í í í í í í í í í í ...í í í í í í 100
- (17.16): :
ó ó ó í ..100
- (17.17): :
í í í í í í í í í í í í í í í í í 101
- (17.18): :
ó í í í í í í í í í í í í í í í í 102
- (17.19): :
í í í í í í í í í í í í í í ..í í í 102
- (17.20): :
í í í í í í í í í í í í í í í í ...í í í í 103



. . . :

. . . . :

. . . :

. . . :

& : &

. . . :

. . . . :

. . . :

. :

. . . . :

. . . . :

/ :

. . . . :

. . . . :

. . . . :

. :

. :

. :

. :

. :

. :

. :

. :

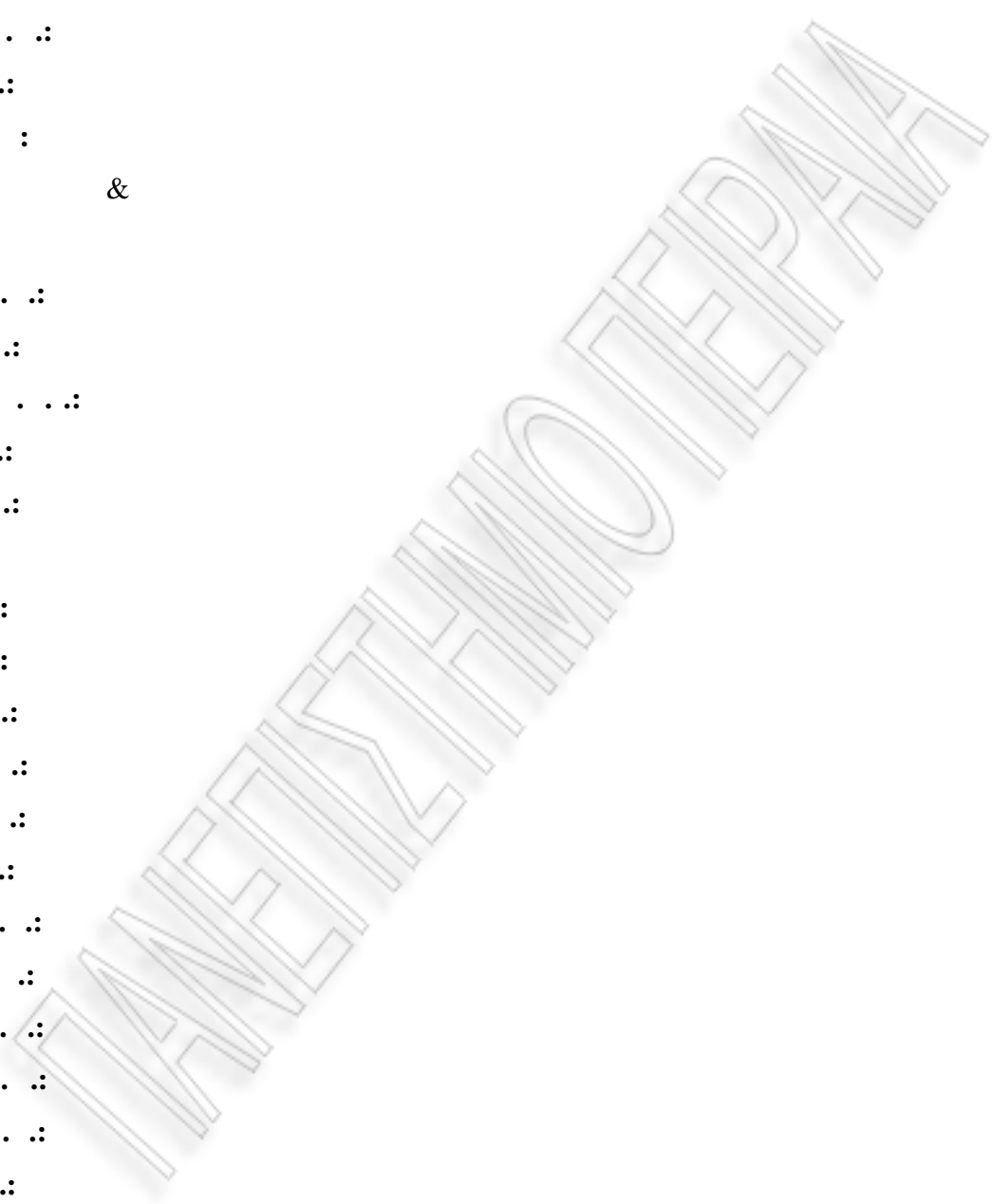
. :

. :

. :

. :

. :



- . . .:
- . . .:
- . . .:

E.R.P.: Enterprise Resource Planning

P.P.P.: Public Private Partnership

R&D: Research & Development

R.O.I.: Return On Investment



ПАВЕЛЪ ИМО ПЕРПА

ПАВЕЛЪ ИМО РЕПАА

« »,

,

,

.

,

.

« » « » ,

ó

ó

,

».

ó

«

»

,

(

).

«

»

«

»

,

,

.

,

.

»

,

,

.

«

Eur-A»,

27

Eur-A,

.

,

,

,

,

,

,

,

,

,

,

,

,

,

,

,

,

,

,

,

,

,

,

,

,

,

,

,

,

.

2:

(2003-2008)

354

1.

2.

3.

130

2005

«e-Europe 2005»,

(e-Health).

«e-Health»

2005.

3329/2005

17

.

17

.

(Public Private Partnership - PPP)

17

7,

«

»

7



1

()

↘ ' , ' ' ,
2

()

↘ ' ,
3

()

↘ ' ,
4

()

↘ ,
5

()

↘ , , , ,
6

()

↘ , 7 ()

« ó 2000-2006»,
2005, 89%
, 689 ,
392 76,29%

143.303.912 (28%

),

2004

2005,

«IASYS»,

2007,

19

70

115

256

ø

ï

ï

10

'80

'80

2000

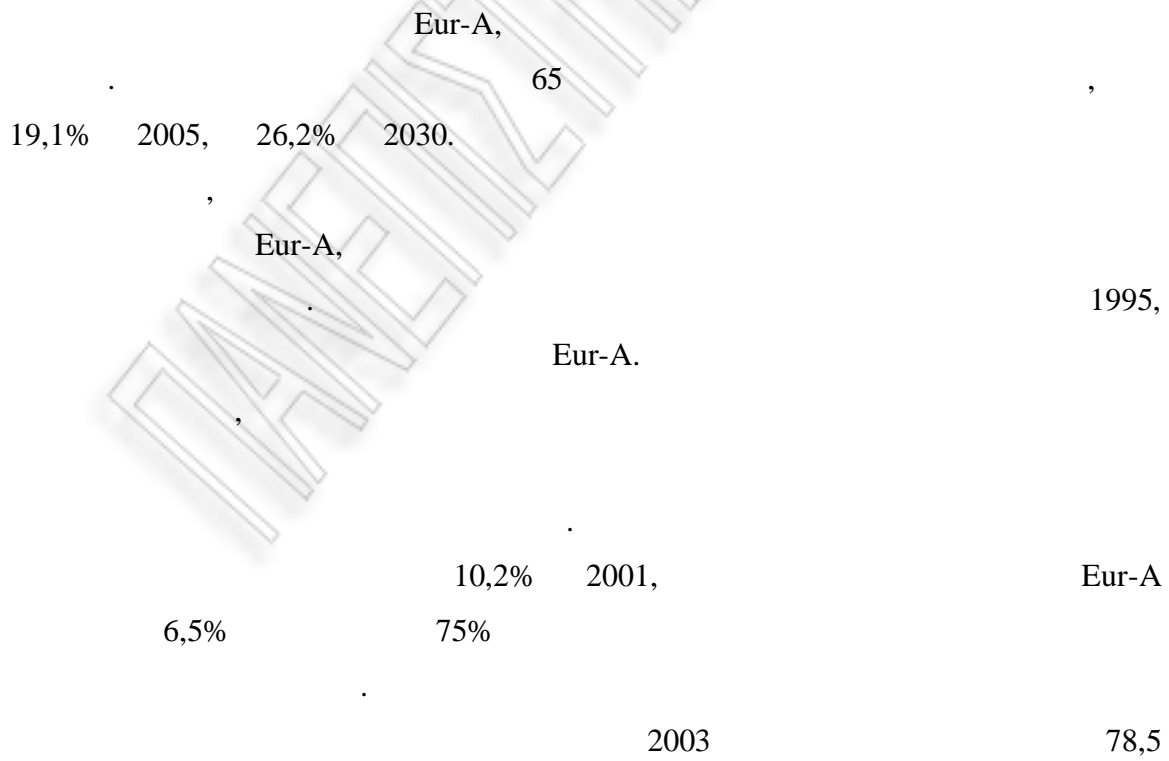
2004,

()

3:

ПАВЕЛЪ ИМО ПЕРВА

3.1



30

- . . . ,
- . . . ,
- . . . ,
- . . . ,
- . . . ,

3.3

2,1%

8,1%,

).

ó

(

.)

(

.)

4:

ϕ
ϕ
ϕ
ϕ
ϕ

4.3

12,5%

(38,8%) (2,5%), (11,2%).

()

()

... (14)
(...).

ó :
:

4.4 . . .

...
... 90%

↓ ...
↓ ...
↓ ...
↓ ... 73

3.100

↓ ...

650

4.5 . . .

(,) (,)

50

()

. . . .

,

. . . .

,

6

180

, 110

4.6 . . .

⇒

,

. . . .

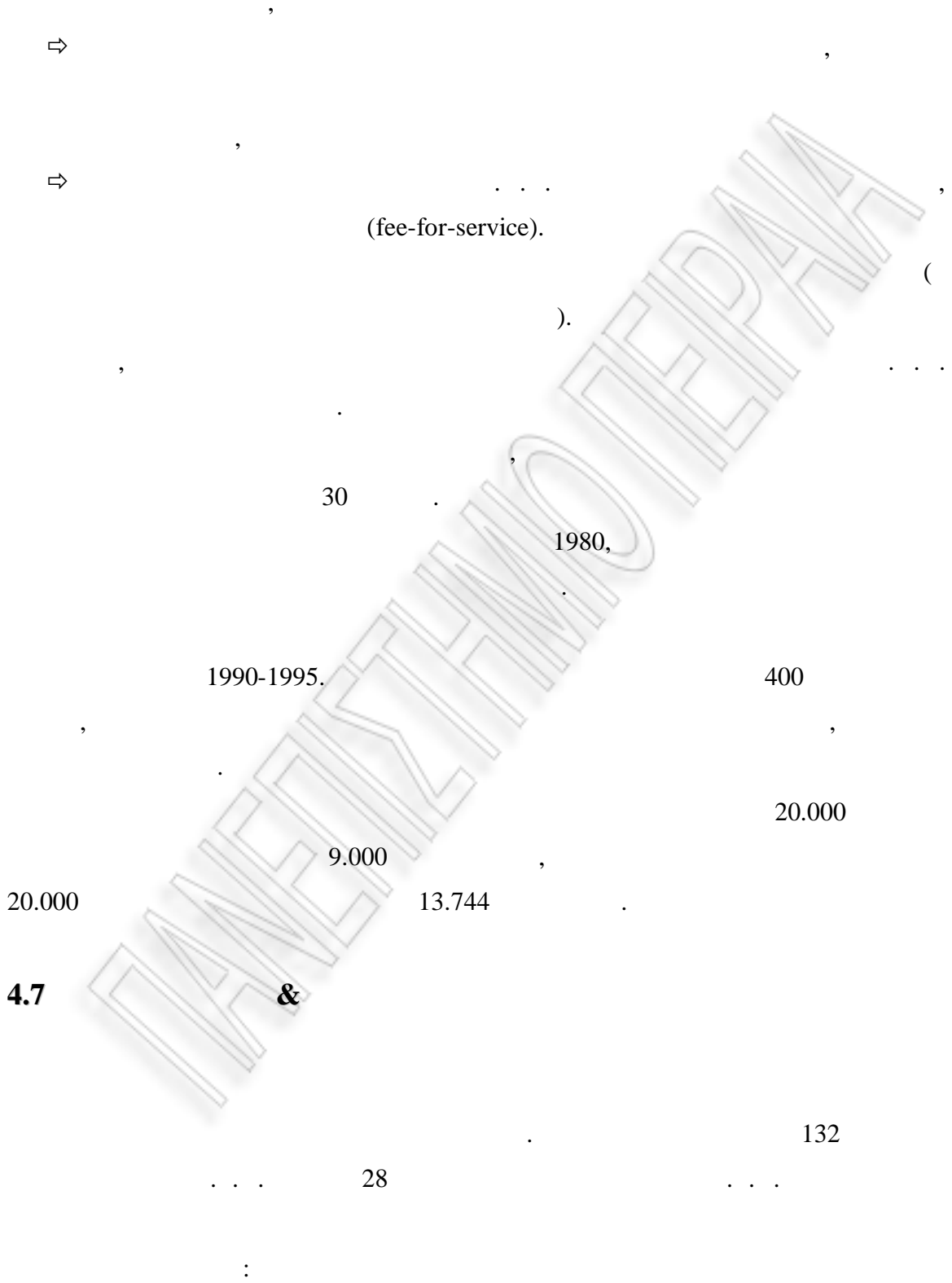
,

⇒ (

300),

⇒ (

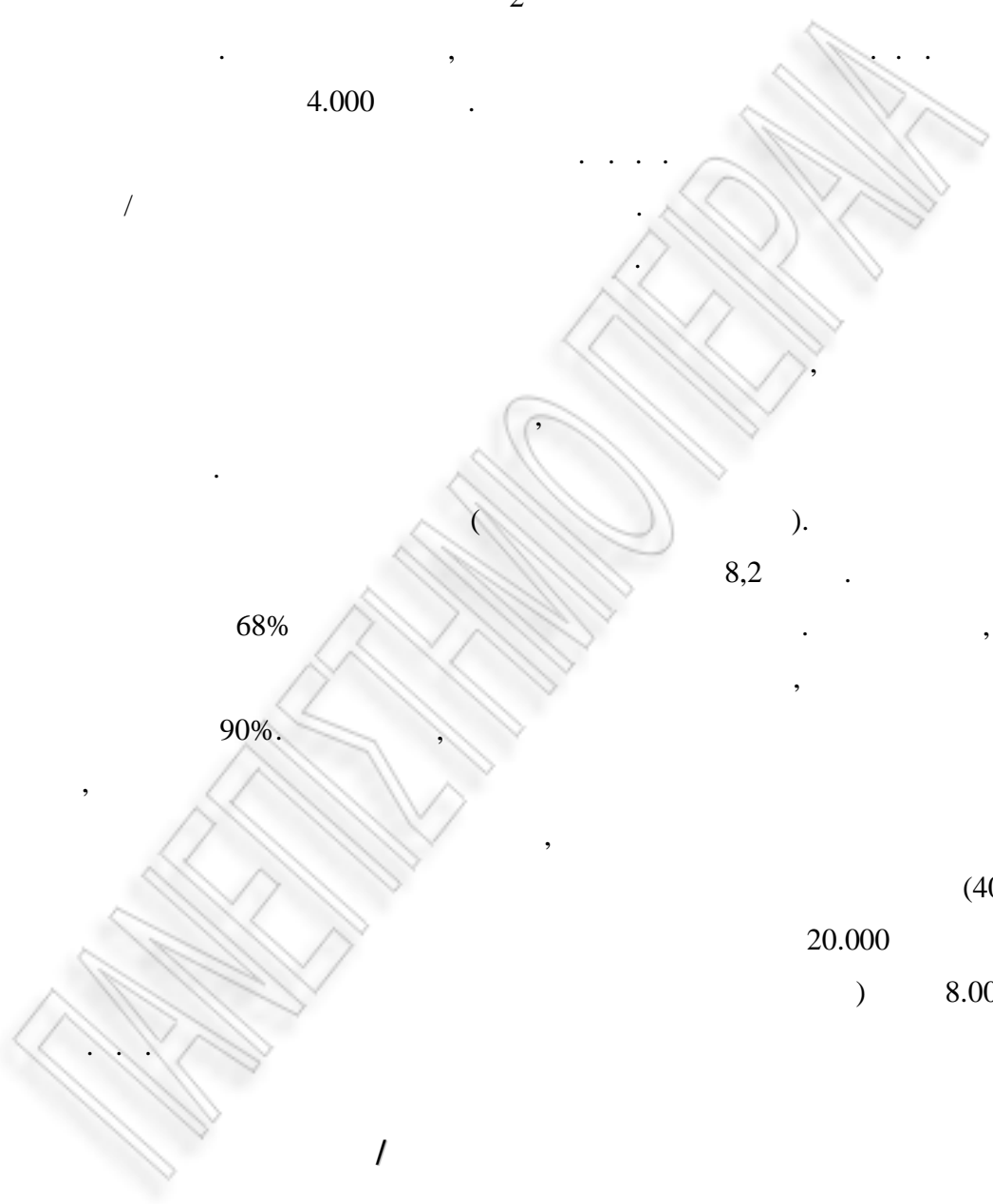
. . . .),



. 14
 , 5
 , 2 &
 2
 .
 4.000
 /

 (.)
 8,2
 68%
 90%
 ,
 ,
 (40-
 60%). 20.000
 () 8.000

4.9 /



. 1983
 (.)
 1983-1992,



4.10

1981-1996. 1981, (16)
6
, 1984
20 , (59%)
(,)
(, 6 ,)
,)

4.11

1980 ,
,
... ,
,
(,)
,

:

. . . . , 1983 . 1316
.
:

œ
œ
œ
œ
œ



5:

5.1 X

. . . . ,
.
(. . . .)
, ,
(. . . . ,),

30
9,9%
2003. 5,1%
2003
1995 (52%) 2001 (54,2%) 2002
2,6 51,6% 2003
(51,3%).

5.2

1990 2001. 2001
(33,9%) (32,0%).
1996. (4,4%),
(71,1%)
(13,6%). 2%
18,4%
5,8

5.3



400

1997 ó 2002,

86% (103%)

(43%).

2002 945

539

164

2002

241

2004,

361 397

10%.

33% 2003, 34 25,5

2003.

2003.

« »,

(27,6%).

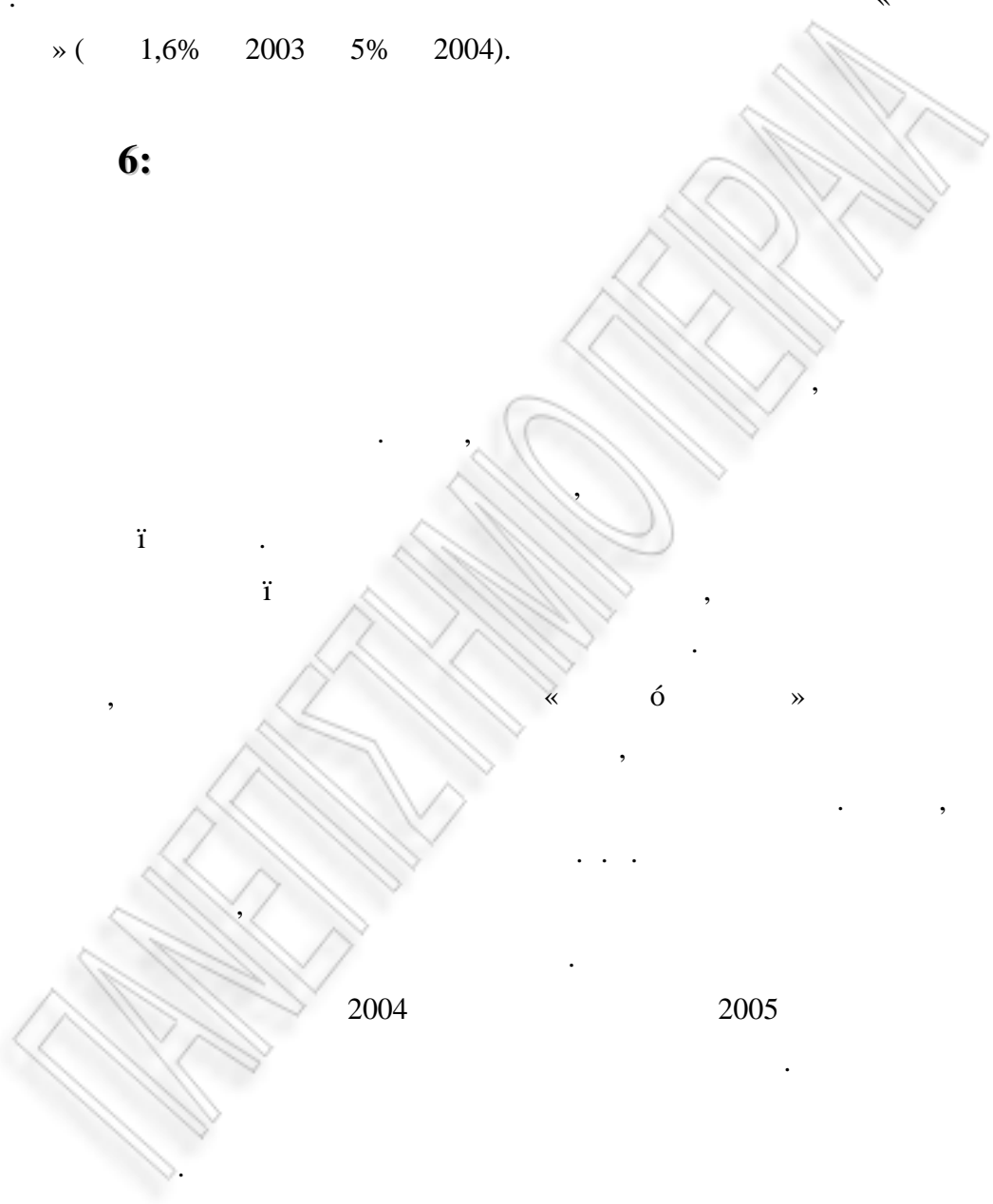
(27,2%) « ».

2003 ó 2004,

« » « »

» (1,6% 2003 5% 2004).

6:



2004

2005

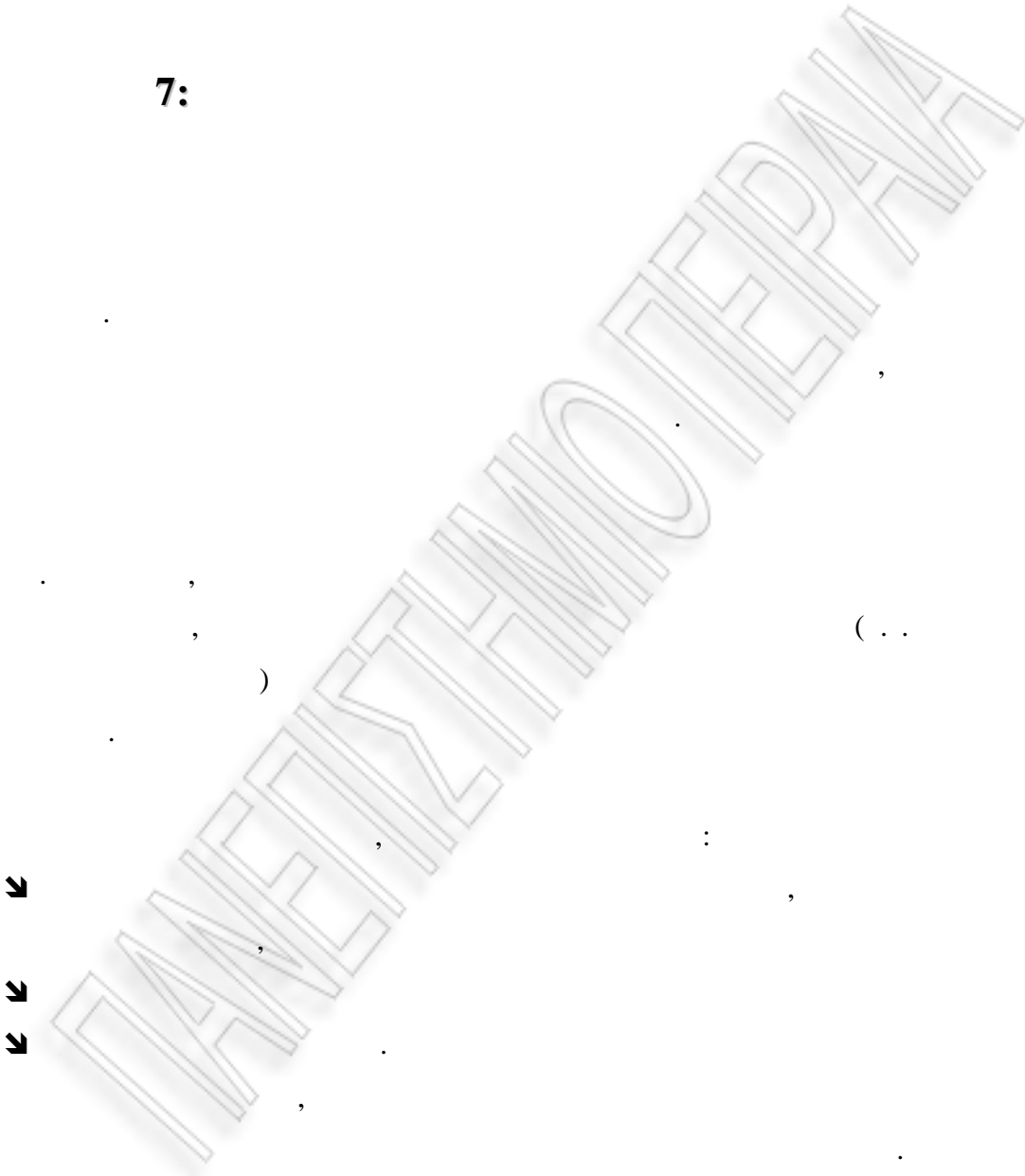
...

«
»
2005
2007 ó 2013,
«IASYS»,
Master
Plan.

ПАВЕЛЪ ИМО ПЕРПА

&

7:



- ↘
- ↘
- ↘

... , 32% (on-line), 40% ...

(7.1):

	Χρησιμοποιούν Τεχνολογία	Σχεδιάζουν να χρησιμοποιήσουν	Κανένα Σχέδιο
Τραπεζικός Τομέας	48,91	16,37	34,72
Ασφάλιση/ Οικονομικά	30,13	23,37	45,24
Πρωτογενής Παραγωγή	45,41	19,78	32,83
Δευτερογενής Παραγωγή	52,18	15,83	29,05
Υγεία	36,54	7,21	43,64
Μεταφορές/ Επικοινωνίες/ ΜΜΕ	61,60	9,74	28,20
Λιανική/ Χονδρική Πώληση	50,69	3,96	44,52
Υπηρεσίες	37,03	20,38	42,59
Εκπαίδευση	64,95	9,90	20,99
Κεντρική Διοίκηση	63,39	13,04	18,97

: European Information Technology ó EITO, 2005

8: . . .

8.1

ó

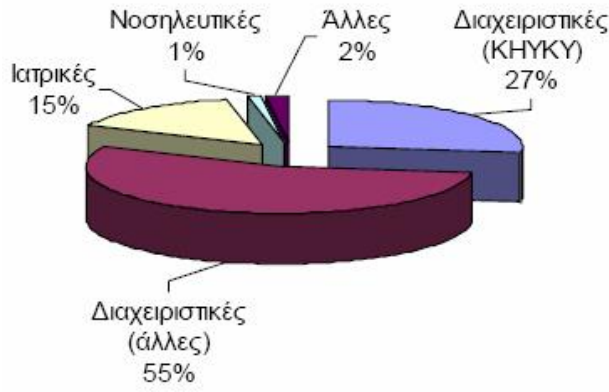
(business process reengineering)

(Electronic Patient Record ó EPR).

⇒ 80%

&

(8.1):



⇒

25:1.

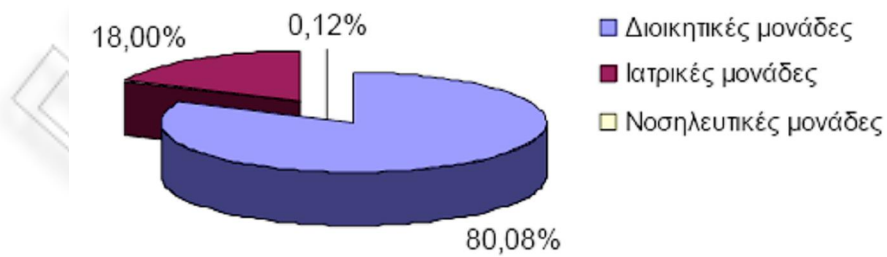
300 (80:1),

100 (6:1).

⇒

80 %

(8.2):



⇒ 45%

(5%)

⇒

e-mail

⇒ 15%

()

()

«e-Europe».

ó

:

...

,

...

:



,



(

ó

)



.....



:

1. _____

...



(

,

,

.)

,

,

,

,

2. _____

3. _____

(8.1):

	ΤΙΜΗ ΒΑΣΗΣ	2006
Αριθμός ΠΕΣΥ με Πληροφοριακά συστήματα διοίκησης	0	17
Αριθμός σταθμών εργασίας σε Δημόσια Νοσοκομεία και Κέντρα Υγείας	968	7.500
Αριθμός Μονάδων Υγείας που διασυνδέονται		320
Αριθμός Φορέων Πρόνοιας που αναπτύσσουν πληροφοριακά συστήματα	0	20

(8.2):

. . .

	Τιμή Βάσης	2006
Ποσοστό Δημόσιων Νοσοκομείων που εξοπλίζονται	22%	100%
Ποσοστό Κέντρων Υγείας που διασυνδέονται	0	100%
Αριθμός Η/Υ φορέων υγείας σε σχέση με τους εργαζόμενους *	5%	40%
Ποσοστό Κέντρων Υγείας και Μονάδων Υγείας που εξοπλίζονται	0	100%

*

8.2

(E-HEALTH)

(e-Health),

1999

«

»



on-line

(B2C

= «business to consumer»).



(B2B = «business to business»).



peer-to-peer

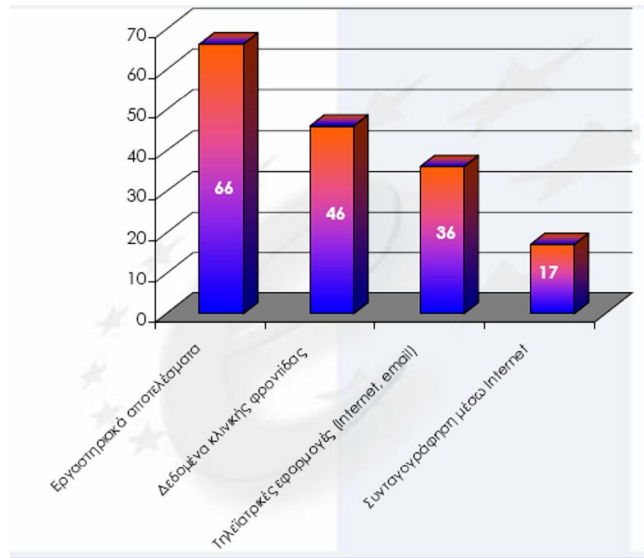
(C2C = «consumer

to consumer»).

e-Health

(8.3):

e-Health



, e-Health Conference, Cork, 2004

Ω (Efficiency):

Ω _____ :

☞ _____ (Evidence based):

☞ _____:

☞ _____:

☞ _____:

on-line ()

☞ _____:

☞ _____:

on-line

☞ _____:

ó

☞ _____:

Business).

Web (Web-enabled),

(WiFi)

« » (Laptop, Notebook, PDA, cellular phones,).

8.3

21

21

(on-line)

/

ó

8.4

...

ó

(

)

/

50%

2004.

66%

«

».

2008

8.5

• • •

.

,

,

/

∅

,

,

,

:

↘

:

↘

/

:

,

/

↘

:

,

,

,

↘

&

:

,

.

,

,

/

8.6

. . .

/ :

(8.3):

. . .

Λειτουργία	Επίδραση
Ατομικός ηλεκτρονικός φάκελος νοσηλείας	Βελτιστοποίηση των διαδικασιών επικοινωνίας Μείωση του κόστους διπλών ενεργειών Καλύτερη διαχείριση αρχείου Καλύτερη εξυπηρέτηση ασθενούς Δυνατότητα στατιστικών μελετών
Αυτοματοποίηση των διαδικασιών έκδοσης εισιτηρίων / εξιτηρίων	Αποτύπωση της διαδικασίας εξυπηρέτησης του πολίτη Η διαδικασία έκδοσης, αναθεώρησης, έγκρισης και καταχώρησης (φύλαξης) επιταχύνεται / διευκολύνεται Γίνεται εφικτή η ανίχνευση / διόρθωση λαθών
Ηλεκτρονικές προμήθειες	Έλεγχος αποθήκης, έλεγχος μη συμμορφούμενων δειγμάτων Μείωση υλικών που αχρηστεύονται (λόγω σύντομου χρόνου ζωής) Μείωση κόστους προμηθειών
Εφαρμογές τηλεϊατρικής	Εξυπηρέτηση απομακρυσμένων περιοχών Ποιοτικότερες υπηρεσίες υγείας Απορρόφηση εξειδικευμένου προσωπικού Κατάρτιση / επιμόρφωση (τηλεεκπαίδευση)
Ηλεκτρονικές εφαρμογές διαχείρισης των ραντεβού	Μείωση νεκρού χρόνου στο πρόγραμμα διενέργειας εξετάσεων Καλύτερη διαχείριση πόρων Μείωση παραπόνων / δυσαρεστημένων ασθενών
Ηλεκτρονικές εφαρμογές αποπληρωμής	Μείωση λαθών & παραπεμπτικών που απορρίπτονται Μείωση κόστους προσωπικού Καλύτερη επικοινωνία με τα Ταμεία
Ηλεκτρονικές υπογραφές	Ασφάλεια στις συναλλαγές / Προστασία ασθενούς Έλεγχος πρόσβασης σε εμπιστευτικές πληροφορίες Μείωση χρόνου συναλλαγών
Έξυπνες κάρτες	Έλεγχος προσέλευσης προσωπικού Έλεγχος φυσικής πρόσβασης σε ελεγχόμενες περιοχές Ασφαλής διαχείριση ηλεκτρονικού ιατρικού φακέλου

, . . .

8.7

∞ _____:

⌘ _____:

, .
.
,
,
,
) / (

⌘ _____:

(. . . . ,) .

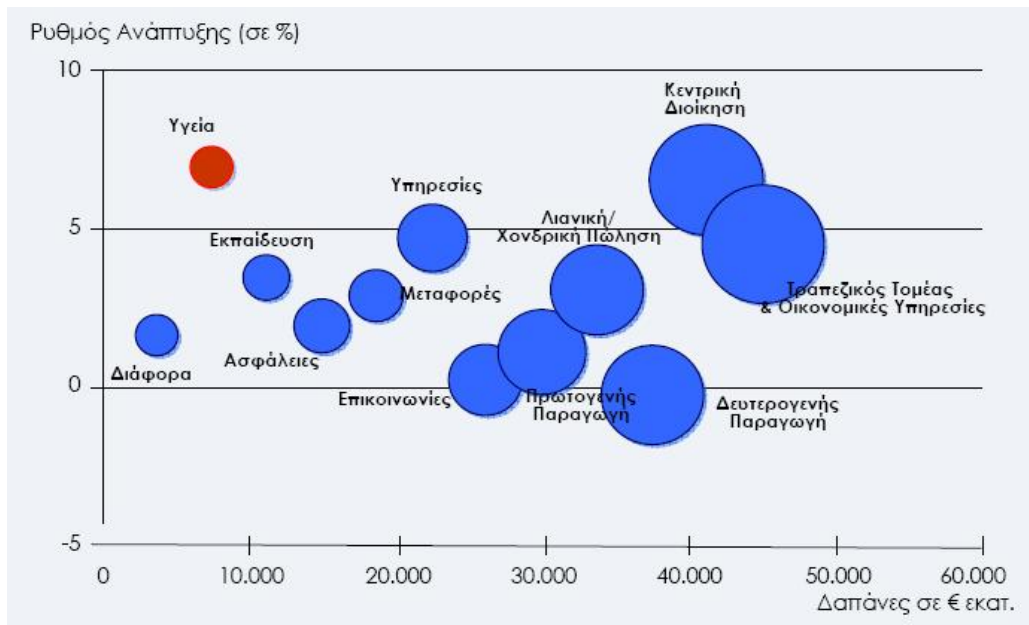
8.8

. . . .

e-

∅

(8.4):



: European Information Technology ó EITO, 2005

E.R.P.

intranet

e-marketing

on-line.

15%

1

11

1997,

(22) 2002.

1993

1994

10%,

(e-Health R&D),

10-

(Information & Communication Technologies ICT Framework Programs FP2 ó FP5).

(8.5):

e-Health

Προηγούμενη 10-ετία (1991–2002)				Τρέχουσα 10-ετία (2003–2014)
FP2	FP3	FP4	FP5	FP6
Εφαρμογές Πληροφορικής για Ιατρούς (Computer Applications for Doctors)	Υπηρεσίες και Συστήματα Τηλεϊατρικής (Telemedicine Systems and Services)	Περιφερειακά Δίκτυα Πληροφορικής για την Υγεία (Regional Health Info Networks)	Συστήματα παροχής φροντίδας στο σπίτι (Home-care Systems) Προσωπικά Συστήματα παροχής φροντίδας (Personal Health Systems)	Φορετά και Εμφυτεύσιμα Συστήματα (Wearable and Implantable Systems)
Προϋπολογισμός 20 Μ €	Προϋπολογισμός 100 Μ €	Προϋπολογισμός 140 Μ €	Προϋπολογισμός 200 Μ €	Πληροφοριακή Υποδομή Γνώσης στον Τομέα Υγείας και Συστήματα Υποστήριξης Αποφάσεων (Health Knowledge Infrastructure & DDS)
Έργα 30	Έργα 63	Έργα 158	Έργα 125	Βιοϊατρική Πληροφορική & ανάπτυξη Health- Grid (Biomedical Informatics & HealthGrid)
Αποτελέσματα Μελέτες Εφικτότητας	Αποτελέσματα Ανάπτυξη Κοινότητας	Αποτελέσματα 1 ^η ομάδα προϊόντων	Αποτελέσματα Ανάπτυξη Ευρωπαϊκής Βιομηχανίας Τηλεματικής	Διαχείριση Ασθενειών (Disease Management) βασισμένη σε επεξεργασία πληροφορίας

8.9

. . . .

↘

...

↘

↘

↘

↘

⊗

⊗

⊗

(project management)

(standards)

∅

interfaces

∅

∅

de facto

∅

∅

∅

∅

∅

20

(R.O.I).

⊗

⊗

outsourcing

⊗

(Project Management)

⊗

Web-based

9:

(INTERNET = INTERnational + NETwork),

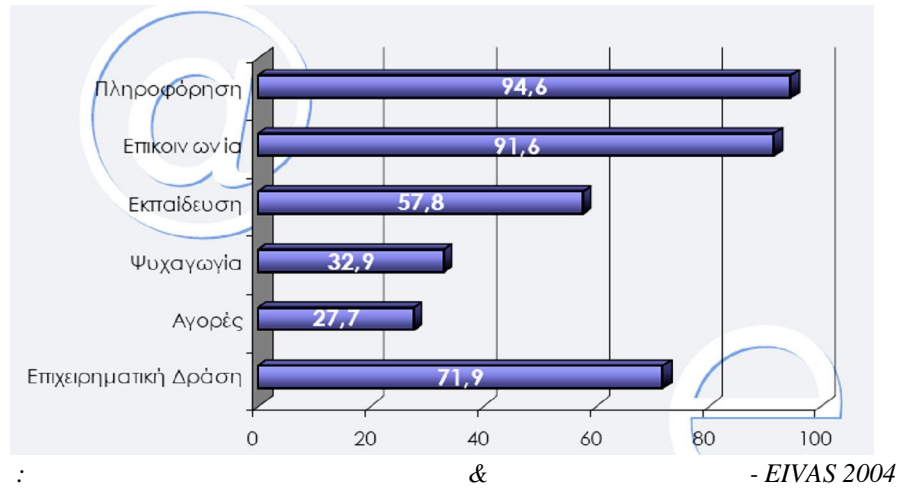
9.1

(200 600). :

-
-
- . . .
- ()

-
-
-

(9.1):



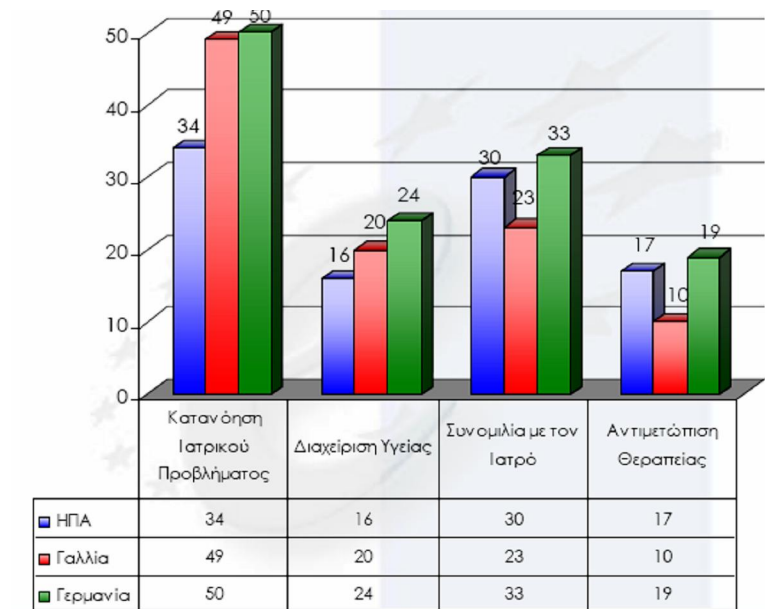
«e-Europe» 2005

- ⇒ 1 2 ()
- ⇒ 1 4 1 5
- ⇒ (16-24: 42%, 25-34: 30%),
- ⇒ 1 4
- ⇒ 10+
- ⇒ 1 3
- ⇒ (5%)

- ⇒ ,
- ⇒ 8 10 10+ 1 9
- ⇒
- ⇒ e-mail, 1 3
- ⇒
- ⇒ 1 2 1 4
- ⇒ 1 4

9.2

- ⤵ :
- ⤵ « »
- ⤵ (usenet news)
- ⤵ ()
- ⤵ (Discussion groups)
- ⤵ (F.T.P.) :
- ⌘ /
- ⌘
- ⤵ , «telnet»
- ⤵ /
- ⤵ «archie» ftp

10:**(10.1):**

: e-Health Conference, Cork, 2004

2000

20.000

(sites)

1.000

Forester Research,

370

(2005).

1.200

, 79% , 5

,
36%
, 10% 6%
6%, 5,5
93 ,

85%
15-20%

10.1

/ - , / , ,
:

⌘
⌘
⌘

ó

10.2

↓ sites
↓
↓
« »

(information overload)

(data mining, query development

schemas).

10.3

:
⌘ _____ :

65,

_____:

_____:

_____:

_____:

_____:

(. . .)

(nternet

),

_____:

_____:

«NLM», 7 1996 120 «Medline», 1997

10.4

(logistics).

on-line

11

23

on-line,
(2000)
, , « » 2002,
(23%)

(
40%,
15%), 41%
, 67%
61%

2002 « »
»,

- ⇒
- ⇒
- ⇒
- ⇒
- ⇒
- ⇒

ó

.

,

,

,

,

30%

16%,

85%

.

10.5

:

⌘ _____ (Content):

(Portals),

(,)

⌘ _____ (e-Commerce):

to-Business (B2B), Business-

(auctions)

on-line

p100 1.200

5.000

Business-to-Consumer (B2C)

e-Pharmacies

online

1

& _____ (Connectivity):

(Application Service Providers-ASPs),

front-end

10.6

,
(, , . .),
(, . .),
() ,

(Web-

based information prescriptions - WebIPs).

(10.1):

	Population	Internet Users	%
Albania	3.582.205	12.000	0,33%
Bosnia and Herzegovina	3.989.018	45.000	1,13%
Bulgaria	7.537.929	585.000	7,76%
Croatia	4.422.248	480.000	10,85%
FYROM	2.063.122	100.000	4,85%
Moldova	4.439.502	60.000	1,35%
Romania	22.271.839	1.000.000	4,49%
Serbia and Montenegro	10.655.774	400.000	3,75%
<u>Total</u>	58.961.637	2.682.000	4,55%
Greece	10.665.989	1.400.000	13,13%
Slovenia	1.935.677	600.000	31,00%
<u>Total</u>	12.601.666	2.000.000	15,87%

10.7

,
 . ,
 . ,
 , ,
 , ,
 :
 ↓ (. .
 retail ,
 ↓).
 ↓ , .
 ↓ ó ó
 ,
 ↓ ,
 ,
 (. .
).

10.8

10.9

54

(Evidence-based information)

80%

7.4%

2002.

10.10

(2005

130

),

«e-Europe 2002»

ó

œ

œ

œ

œ
œ
œ

Portal». e-Health «Health ó EU
47 :

40.000
20
1,5
ó

10.11

œ
œ

e-Health.

(12 10

) , ,
 ,
 . e-Health «
 »

(
customer loyalty).
 ,
 ,
 ,
 ,
 ,
 ,
 .

&

11:

12:

127 , 209 338 2 .

7 :

1. (90

31 , 57 2

)

2. (39

16 23

)

3. (44

13 31)

4. (39

20 19

)

5. (55

11 44

)

6. (54 28

26)

7. (17

8 9)

,

1 7

.

,

,

, 94

.

94

, 67

, 25

2

.

,

,

,

.

(2007),

(12.1):

ó

ó

/				
1	-	(0-3)		3
2	E - mail	(0-1)	= 0, = 1	1
3	-	(0-3)	(&), , (,) , .	3
4	-	(0-3)	/	3
5	-	(0-1)	= 0, = 1, (, ,).	1
6	-	(0-3)	,	3
7		(0-3)	/	3
8		(0-1)	= 0, = 1	1
9		(0-1)	= 0, = 1	1
10		(0-1)	= 0, = 1	1
11		(0-1)	= 0, = 1	1
12		(0-1)	= 0, = 1, &	1
13		(0-1)	= 0, = 1	1
14		(0-3)	: , , , , ; , ATMs .	3
15		(0-3)	:	3
16	-	(0-3)	&	3
17		(0-1)	= 0, = 1	1
18		(0-1)	= 0, = 1	1
19		(0-1)	= 0, = 1	1
20		(0-1)	= 0, = 1	1
21		(0-1)	= 0, = 1	1
22		(0-1)	= 0, = 1	1
23		(0-1)	= 0, = 1	1
24	,	(0-1)	= 0, = 1	1
25		(0-1)	= 0, = 1	1
26	-	(0-1)	= 0, = 1	1
27		(0-1)	= 0, = 1	1
28		(0-1)	= 0, = 1	1
				44

13:

44.

(13.1):

/					
1	" "		32	1	72,73%
2			31	2	70,45%
3			29	3	65,91%
4	" "		28	4	63,64%
5	" "		28	4	63,64%
6	" "		26	6	59,09%
7	" "		25	8	56,82%
8	" "		26	6	59,09%
9	/ " "		25	8	56,82%
10			24	10	54,55%
11			24	10	54,55%
12	" "		23	12	52,27%
13	" "		23	12	52,27%
14	" "		23	12	52,27%
15	" "		23	12	52,27%
16	" "		22	16	50,00%
17	" "		22	16	50,00%
18	" "		22	16	50,00%
19			22	16	50,00%
20	" . & . "		21	20	47,73%
21	METROPOLITAN HOSPITAL		21	20	47,73%
22	" "		21	20	47,73%
23			21	20	47,73%

24	" "	20	24	45,45%
25		20	24	45,45%
26		20	24	45,45%
27	" "	19	27	43,18%
28		19	27	43,18%
29	" _ "	19	27	43,18%
30		18	31	40,91%
31	- " "	19	27	43,18%
32	" "	18	31	40,91%
33		18	31	40,91%
34	" "	17	34	38,64%
35	" "	17	34	38,64%
36	INTERDENT	17	34	38,64%
37	" "	17	34	38,64%
38	" _ "	17	34	38,64%
39		17	34	38,64%
40	" "	16	40	36,36%
41	" . " "MEDITERRANEO"	16	40	36,36%
42	" "	16	40	36,36%
43	N " " _ "	16	40	36,36%
44	()	16	40	36,36%
45		16	40	36,36%
46		16	40	36,36%
47	" "	15	48	34,09%
48		15	48	34,09%
49	" "	16	40	36,36%
50		15	48	34,09%
51	- &	15	48	34,09%
52		15	48	34,09%
53	. . .	14	53	31,82%
54		14	53	31,82%
55	" "	14	53	31,82%
56	" "	14	53	31,82%
57	" "	14	53	31,82%
58	- " "	14	53	31,82%
59		14	53	31,82%
60	" "	14	53	31,82%
61	" "	13	61	29,55%
62	" "	13	61	29,55%
63		13	61	29,55%
64	&	13	61	29,55%
65	" & "	13	61	29,55%
66		13	61	29,55%
67	" "	12	68	27,27%
68	" "	12	68	27,27%
69		12	68	27,27%
70	-	12	68	27,27%
71		12	68	27,27%

72			13	61	29,55%
73	" "		12	68	27,27%
74		12	68	27,27%
75	"EUROMEDICA"		11	75	25,00%
76	" "		11	75	25,00%
77	" "		11	75	25,00%
78	" "		11	75	25,00%
79	" "		10	80	22,73%
80			10	80	22,73%
81	-		11	75	25,00%
82			10	80	22,73%
83			10	80	22,73%
84	" "		9	85	20,45%
85			10	80	22,73%
86	" "		9	85	20,45%
87	" "		9	85	20,45%
88	()		9	85	20,45%
89	" "		7	89	15,91%
90	" "		6	90	13,64%
91	-		6	90	13,64%
92	- -		6	90	13,64%
93	" "		4	93	9,09%
94	" "		1	94	2,27%
			16,12		36,63%

36,63%,

16,12/44.

, « »

72,73%,

32/44

, «
»
70,45%

, «

65,91%.

»

»

63,64%

«

« »

« » 2,27%, .

94 , 56

14:

44.

(14.1):

/					
1			29	1	65,91%
2	" "		28	2	63,64%
3	" "		25	3	56,82%
4	/ " "		25	3	56,82%
5			24	5	54,55%
6			24	5	54,55%
7	" "		23	7	52,27%
8	" "		23	7	52,27%
9	" "		23	7	52,27%
10	" "		22	10	50,00%

11	" "		22	10	50,00%
12	" "		22	10	50,00%
13			22	10	50,00%
14	" . & "		21	14	47,73%
15	" "		21	14	47,73%
16			21	14	47,73%
17	" "		20	17	45,45%
18			20	17	45,45%
19			20	17	45,45%
20	" "		19	20	43,18%
21			19	20	43,18%
22	" - "		19	20	43,18%
23	" - "		19	20	43,18%
24	" "		18	24	40,91%
25			18	24	40,91%
26	" "		17	26	38,64%
27	" "		17	26	38,64%
28	" "		17	26	38,64%
29	" "		17	26	38,64%
30			17	26	38,64%
31	N " " _		16	31	36,36%
32	()		16	31	36,36%
33			16	31	36,36%
34			16	31	36,36%
35	" "		15	36	34,09%
36			15	36	34,09%
37	" "		16	31	36,36%
38			15	36	34,09%
39	- &		15	36	34,09%
40			15	36	34,09%
41	" "		14	41	31,82%
42	" "		14	41	31,82%
43	" "		14	41	31,82%
44			14	41	31,82%
45	" "		14	41	31,82%
46	" "		13	46	29,55%
47	" "		13	46	29,55%
48			13	46	29,55%
49	&		13	46	29,55%
50	" & "		13	46	29,55%
51	" "		12	52	27,27%
52			12	52	27,27%
53			12	52	27,27%
54			13	46	29,55%
55	" "		12	52	27,27%
56		12	52	27,27%
57	" "		11	57	25,00%
58	" "		10	58	22,73%

59			10	58	22,73%
60	" "		9	60	20,45%
61	" "		9	60	20,45%
62	" "		9	60	20,45%
63	()		9	60	20,45%
64	" "		6	64	13,64%
65	- -		6	64	13,64%
66	" "		4	66	9,09%
67	" "		1	67	2,27%
			16,10		36,60%

36,60%,

16,10/44.

« »

65,91%,

29/44

«

»

63,64%

«

»

/

56,82%.

«

»

«

»

«

»

«

»

2,27%,

.

,

37

67

,

,

.

15:

(44)

(15.1):

/					
1	" "		32	1	72,73%
2	" "		28	2	63,64%
3	" "		26	3	59,09%
4	" "		23	4	52,27%
5	METROPOLITAN HOSPITAL		21	5	47,73%
6			18	6	40,91%
7	INTERDENT		17	7	38,64%
8	" "		16	8	36,36%
9	" . " "MEDITERRANEO"		16	8	36,36%
10	" "		16	8	36,36%
11			14	11	31,82%
12			14	11	31,82%
13	- " "		14	11	31,82%
14			13	14	29,55%
15	" "		12	15	27,27%
16			12	15	27,27%
17	"EUROMEDICA"		11	17	25,00%
18	" "		11	17	25,00%
19	" "		11	17	25,00%
20			10	21	22,73%
21	-		11	17	25,00%
22			10	21	22,73%
23			10	21	22,73%
24	" "		7	24	15,91%
25	-		6	25	13,64%
			15,16		34,45%

:

,

34,45%,

15,16/44.

« »

72,73%,

32/44

.

« »

63,64% (

« »

10%)

« »

59,09%.

« »

METROPOLITAN HOSPITAL

«

ó

»

13,64%,

.

,

15

25

,

,

.

16:

K

,

,

,

(44)

.

(16.1):

/					
1			31	1	70,45%
2	" "		26	2	59,09%
			28,50		64,77%

,

64,77%,

28,50/44.

«

»

70,45%,

31/44

«

»

59,09% (

10%),

26/44.

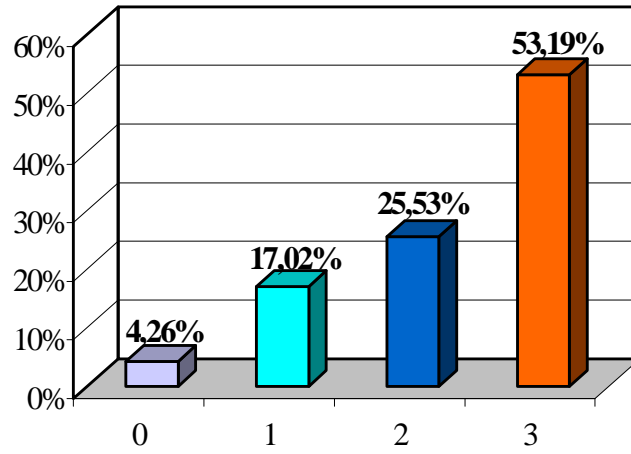
17:

1. _____ ó _____

(17.1):
ó

:

ó



(53,19%)

0 ó 3

1/4

2.

« »

2,28.

2. _____ *ó (e-mail)*

0 ó 1

(17.1):
ó (e-mail) :

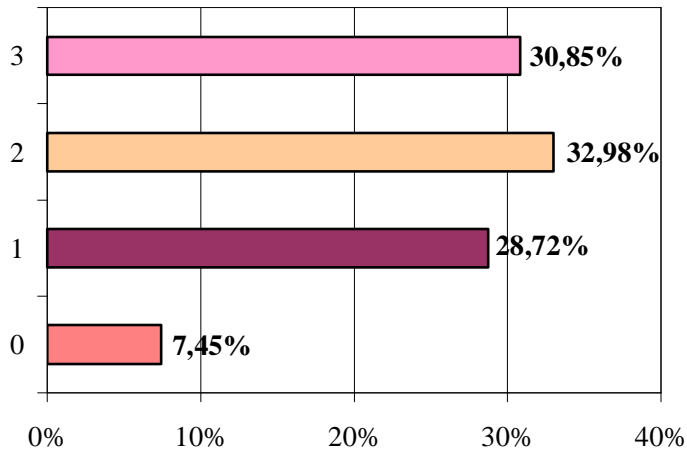
0	0	0%
1	94	100%
: 1		

e-mail « ».

3. _____ ó

(... ,)
, (... , ,)
.

(17.2):
ó :



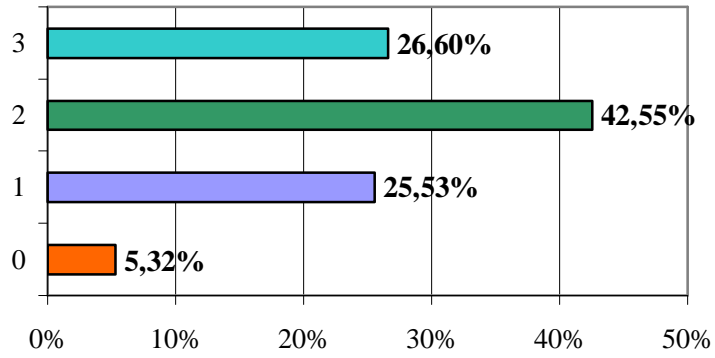
0 ó

3

1,87.

4. ó ó

(17.3): : ó ó



0 ó 3

1,90.

5. ó

(. .

.).

0 ó 1

(17.2):

:

ó

0	40	42,55%
1	54	57,45%
: 0,57		

57,45%

42,55%

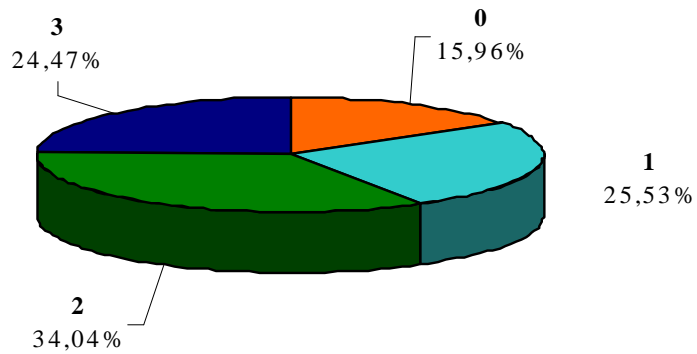
6. _____ ó ó

(17.4):

ó

:

ó

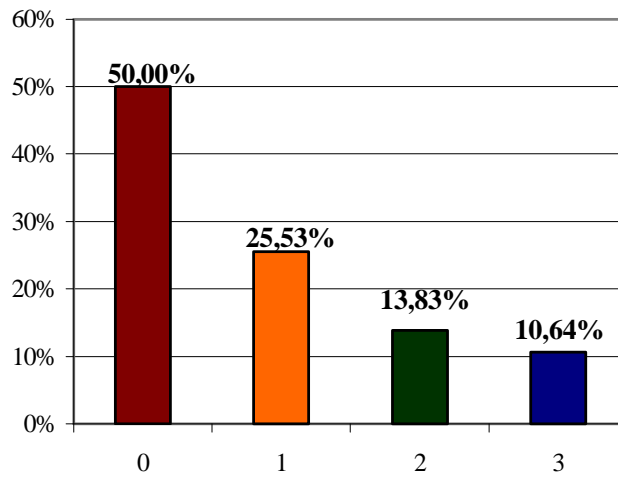


0 ó 3

1,67.
(34,04% 2 24,47%
3)

7. _____

(17.5): :



0 6 3

0,85.

1/4

8. _____

0 6 1

(17.3): :

0	45	47,87%
1	49	52,13%
: 0,52		

9. _____

0 6 1

(17.4):

:

0	62	65,96%
1	32	34,04%
: 0,34		

62 94

10. _____

0 6 1

(17.5):

:

0	74	78,72%
1	20	21,28%
: 0,21		

11. _____

0 6 1

(17.6):

:

0	82	87,23%
1	12	12,77%
: 0,13		

12 94

12. _____

0 6 1

(17.7):

:

0	72	76,60%
1	22	23,40%
: 0,23		

76,60%

/ / .

13. _____

0 6 1

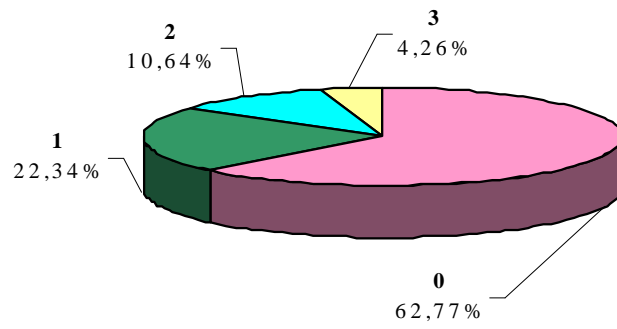
(17.8):

:

0	62	65,96%
1	32	34,04%
: 0,34		

14. _____

(17.6):



0 ó 3

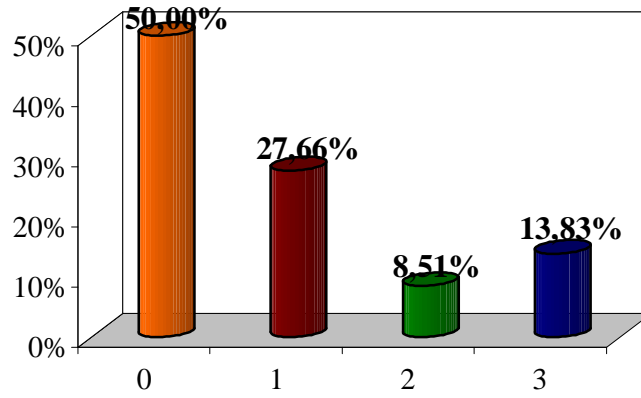
0,56.

15. _____

«The

Norwegian Cancer Union»

(17.7):



0 ó 3

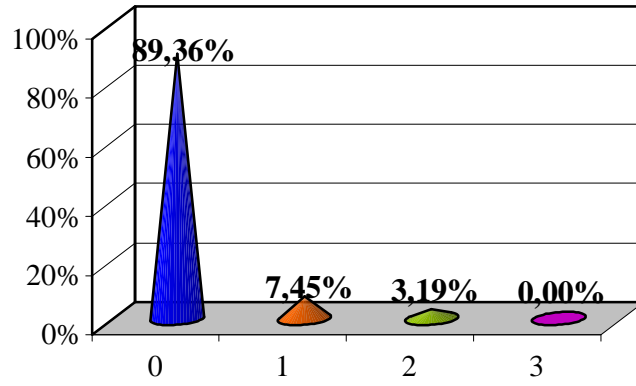
0,86.

16. _____ ó

(17.8):

:

ó



0 ó 3

0,14.

(89,36%)

17. _____

0 ó 1

(17.9):

:

0	93	98,94%
1	1	1,06%
: 0,01		

1 94

18. _____

0 6 1

(17.10):

:

0	50	53,19%
1	44	46,81%
: 0,47		

19. _____

0 6 1

(17.11):

:

0	52	55,32%
1	42	44,68%
: 0,45		

(42 94)

20. _____

0 6 1

(17.12):

:

0	66	70,21%
1	28	29,79%
: 0,30		

1/3

21. _____

0 6 1

(17.13):

:

0	66	70,21%
1	28	29,79%
: 0,30		

1/3

22. _____

0 ó 1

(17.14):

:

0	77	81,91%
1	17	18,09%
: 0,18		

1/5

23. _____

0 ó 1

(17.15):

:

0	89	94,68%
1	5	5,32%
: 0,05		

(94,68%)

24. _____ ó _____ ó _____

0 ó 1

(17.16):

:

ó

ó

ó

0	79	84,04%
1	15	15,96%
: 0,16		

1/6

(15,96%)

25. _____

0 ó 1

(17.17):

:

0	84	89,36%
1	10	10,64%
: 0,11		

(89,36%)

26. _____ ó _____

0 ó 1

(17.18): : 6

0	77	81,91%
1	17	18,09%
: 0,18		

(81,91%)

27. _____

0 6 1

(17.19): :

0	85	90,43%
1	9	9,57%
: 0,10		

9

10

28. _____

0 6 1

(17.20):

:

0	63	67,02%
1	31	32,98%
: 0,33		

1/3

18:

«

»

Τα νέα μας - Microsoft Internet Explorer

Αρχείο Επεξεργασία Προβολή Αγαπημένα Εργαλεία Βοήθεια

Πίσω - Αναζήτηση - Αγαπημένα

Διεύθυνση http://www.psynpo.gr/introduction.htm

ΨΥΧΙΑΤΡΙΚΟ ΝΟΣΟΚΟΜΕΙΟ ΠΕΤΡΑΣ ΟΛΥΜΠΟΥ

> Τα νέα μας

- Αρχή
- Τα νέα μας
- Προφίλ - Ιστορική Αναδρομή
- Τοποθεσία-Πληροφορίες
- Οργάνωση
- Υπηρεσίες νοσηλευόμενων
- Υπηρεσίες για τον Πολίτη
- Κοινωνικές Δομές
- Συμβουλευτικά Όργανα
- Ευρωπαϊκά Προγράμματα
- Εκδόσεις- Έντυπα Υλικό
- Επιστημονικές Εκδηλώσεις
- Εκπαίδευση
- Επικοινωνιακή Πολιτική
- Εθελοντισμός
- Κατάρτιση-Απασχόληση
- Επιχειρησιακός Σχεδιασμός
- Επικοινωνία
- Χάρτης Site

ΕΓΚΑΙΝΙΑ ΝΕΑΣ ΜΟΝΑΔΑΣ ΤΟΥ Ψ.Ν.Π.Ο. ΑΠΟ ΤΟΝ ΥΦΥΠΟΥΡΓΟ ΥΓΕΙΑΣ & ΚΟΙΝΩΝΙΚΗΣ ΑΛΛΗΛΕΓΓΥΗΣ κ. Γ. ΚΩΝΣΤΑΝΤΟΠΟΥΛΟ

Την Παρασκευή 29 Ιουνίου 2007 και ώρα 21.00 επί της οδού Εθνικής Αντιστάσεως 51, στην Κατερίνη πλήθος κόσμου τίμησαν με την παρουσία τους τα εγκαίνια του ΚΕΝΤΡΟΥ ΗΜΕΡΑΣ «ΟΙ ΤΕΣΣΕΡΙΣ ΕΠΟΧΕΣ».

Τον αγιασμό τέλεσε ο Σεβασμιότατος Μητροπολίτης Κίτρους, Κατερίνης και Πλαταμώνος κ.κ. Αγαθόνικος, ενώ τα εγκαίνια πραγματοποίησε ο υφυπουργός Υγείας και Κοινωνικής Αλληλεγγύης κ. Γιώργος Κωνσταντόπουλος.

Το νέο Κέντρο Ημέρας «Οι Τέσσερις Εποχές», είναι έργο συγχρηματοδοτούμενο από την Ε.Ε. κατά 75%, στο πλαίσιο του Ε.Π. «Υγεία Πρόνοια 2000 – 2006». Η νέα Αποκαταστασιακή δομή απευθύνεται σε ενήλικα άτομα με ψυχικές διαταραχές, διαταραχές συμπεριφοράς και κινητικά προβλήματα, παρέχοντας την κατάλληλη ενίσχυση και υποστήριξη, προκειμένου να συνεχίσουν να ζουν φυσιολογικά.

Με την έμπρακτη υποστήριξη του υπουργείου Υγείας και Κοινωνικής Αλληλεγγύης, το Ψ.Ν.Π.Ο. εξασφάλισε για τους πολίτες της Περίας υπηρεσίες υψηλού επιπέδου, καθώς το Κέντρο Ημέρας διαθέτει αίθουσες Εργοθεραπείας, Γυμναστηρίου, Φυσιοθεραπείας, Μουσικής, Πολυαισθητηριακή (αίθουσα χαλάρωσης), Ηλεκτρονικών υπολογιστών, Κομμωτικής και αισθητικής περιποίησης, Ξυλοτεχνίας, Ψυχαγωγίας, Συνεδριάσεων, καθώς και σαλόνι, τραπεζαρία, κουζίνα.

« Κάποιοι από τους συνανθρώπους μας χρειάζονται κάτι περισσότερο από μια δεύτερη ευκαιρία, ος τη δώσουμε »

Τα νέα μας

(9 items υπολείπονται) Λήψη της εικόνας http://www.psynpo.gr/images/programmasynedriou/NTZE7545.jpg...

Internet

έναρξη Windows Messenger Τα νέα μας - Microsof...

7:28 μμ

IASO Group - Microsoft Internet Explorer

Αρχείο Επεξεργασία Προβολή Αγαπημένα Εργαλεία Βοήθεια

Πίσω Αναζήτηση Αγαπημένα

Διεύθυνση http://www.iaso.gr/group/ Μετάβαση Συνδέσεις

Πέμπτη, 4 Οκτωβρίου 2007

ΟΜΙΛΟΣ ΙΑΣΩ

ΟΜΙΛΟΣ ΙΑΣΩ ΙΑΣΩ General ΙΑΣΩ Θεσσαλίας

Στον Όμιλο ΙΑΣΩ έχουμε σύγχρονη αντίληψη για την υγεία. Στις κλινικές του Ομίλου καλύπτουμε ένα ευρύ φάσμα διαγνωστικών, θεραπευτικών και ερευνητικών υπηρεσιών.

περισσότερα...

HOME ΕΠΕΝΔΥΤΙΚΕΣ ΣΧΕΣΕΙΣ ΓΡΑΦΕΙΟ ΤΥΠΟΥ ΑΝΘΡΩΠΙΝΟ ΔΥΝΑΜΙΚΟ ΘΕΜΑΤΑ ΥΓΕΙΑΣ ΕΠΙΚΟΙΝΩΝΙΑ ΣΙΤΕΜΑΡ English

ΟΜΙΛΟΣ ΙΑΣΩ

» Προφίλ Ομίλου
 » Ιστορία
 » Οργανόγραμμα
 » Πελατοκεντρική φιλοσοφία
 » Εταιρική Κοινωνική Ευθύνη
 » Διεθνείς Συνεργασίες
 » Πιστοποίηση

Δελτία τύπου

» 29/9/2007
 ΠΙΣΤΟΠΟΙΗΣΗ MEDSTEM SERVICES A.E.

» 31/7/2007
 ΙΑΣΩ: ΣΤΟΝ ΠΕΙΡΑΙΑ ΜΕ ΑΝΘΡΩΠΙΝΟ ΠΡΟΣΩΠΟ

» 2/6/2007
 Συνέντευξη του κ. Ι. Ζολώτα στην Εφημερίδα Ισσημία

» 7/5/2007
 Συνέντευξη του Προέδρου Ομίλου Ιασώ Ι. Ζολώτα στο Capital.gr

Εκδηλώσεις

» 5/6/2006
 Τελετή Εορτασμού των 10 Χρόνων Λειτουργίας ΙΑΣΩ

Αναζήτηση

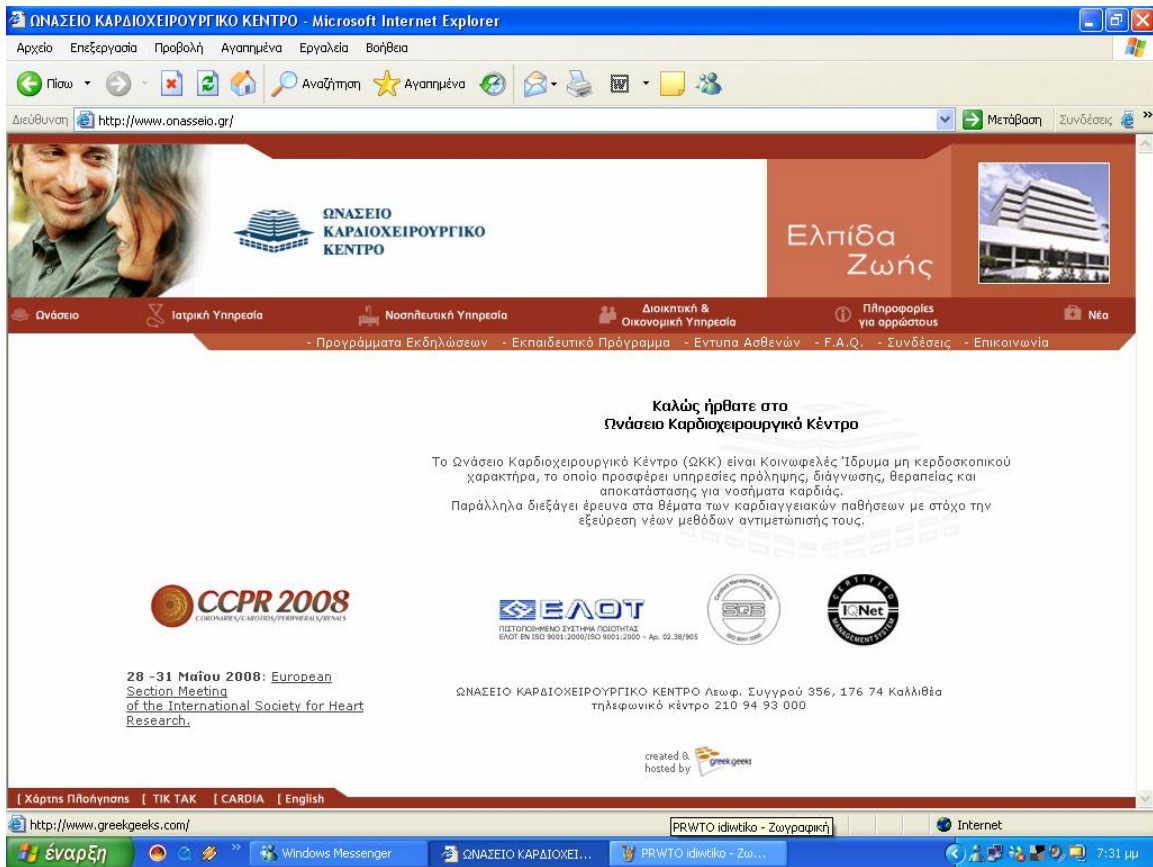
Επιλέξτε Κλινική

MY LIFE
 ΜΑΓΑΛΙΝΑ
 ΕΡΕΥΝΗΤΙΚΟ ΚΑΡΔΙΟ ΤΟΥ ΟΜΙΛΟΥ ΙΑΣΩ

MY CLUB CARD

(1 item υπολείπονται) Λήψη της εικόνας http://www.iaso.gr/CI/Banners/cryobanks.gif... Internet

έναρξη Windows Messenger IASO Group - Microso... PRWTO DHMOSIO - Z... 7:30 μμ



«MAYO CLINIC»,

«MAYO CLINIC».

44.

Mayo Clinic medical information and tools for healthy living - MayoClinic.com - Microsoft Internet Explorer

Αρχείο Επεξεργασία Προβολή Αγορημένα Εργαλεία Βοήθεια

Πίσω

Αναζήτηση Αγορημένα

http://www.mayoclinic.com/ Μετάβαση Συνδέσεις

Medical Services | Health Information | Appointments | Education and Research | Jobs | About

MayoClinic.com Bookstore

MayoClinic.com
Tools for healthier lives

Diseases & Conditions | Drugs & Supplements | Treatment Decisions | Healthy Living | Ask a Specialist | Health Tools | Slide Shows | Video | Blogs & Podcasts

Home | Log in | Register now | RSS

SEARCH

FIND IT FAST Select your topic by first letter
A • B • C • D • E • F • G • H • I
J • K • L • M • N • O • P • Q • R
S • T • U • V • W • X • Y • Z

Look up a disease or condition

Look up a symptom >> **Symptom Checker**

Handle medical emergencies >> **First-Aid Guide**

Manage a Condition

DISEASE AND CONDITION CENTERS
Information and tools to help you manage a chronic disease or condition.

- Allergy
- Alzheimer's
- Asthma
- Atherosclerosis
- Breast Cancer

Get relief
Information on causes, diagnosis and treatments for headaches and migraines.
visit **Headache center**

Heart quiz: Put your heart smarts to the test
Your heart performs with precision and efficiency day in and day out. What do you know about this muscle and what can go wrong?

BLOGS

- Blog: Living in the present — Can you help?
- Blog: Alzheimer's disease and dementia are different

HOUSECALL Our free weekly e-newsletter
Enter e-mail address **sign up >>**
>> More Information

ADVERTISEMENT

Internet

7:36 μμ

:

V

&

19:

21

e-

80%

e-Health

(customer loyalty).

e-Health

338

94

(27, 81%). 94

, 67

, 25

2

36,63%,
16,12/44. ,
10
(72,73% - 32/44) (65,91%
- 29/44). ,
(13,64%),
6/44,
2,27% (
1/44).
(36,60%) (34,45%)
(63,64%)
(59,09%).
64,77% (
28,50/44).

(,),

online

(

),

/

(. . , ,),

20:

(,).

«IASYS»

«IASYS»,

19

115

256

(data capture).

1. . (2006). :
 , : ó
2. (2006).
 , :
3. (2006). *e-Health u-Health* ó
 ; (, , í ;), : 1
4. . (2005). ,
 : ó
5. (2002).
 , ,
 ó *eEurope 2002* (2002):
 , :
6. ó (2002).
 ó ,
7. CAP (2006). : , : CAP.
8. . (2007). ,
9. . (2000).
 , :
10. . (2005). 2005, : . .
 , 2132.

11. (2006). ó ,
(<http://ygeia-gia-olous.blogspot.com>).
12. (2006). (2), (<http://ygeia-gia-olous.blogspot.com>).
13. PINION . . (2005). ó
14. (2006). :
15. (2005).
ó e-Europe, :
16. (2005). &
:

-
1. **Commission of the European Communities (2004).** *Communication from the Commission to the Council, The European Parliament, The European Economic and Social Committee and the Committee of the Regions: e-Health ó Making Healthcare Better for European Citizens: An Action Plan for a European e-Health Area*, Brussels: Commission of the European Communities.
2. **e-Business W@tch (2006).** *ICT and e-Business in Hospital Activities ó ICT Adoption and e-Business Activity in 2006*, European Commission, Sector Report No 10/2006.
3. **e-Business W@tch (2006).** *ICT and e-Business in the Telecommunication Industry ó ICT Adoption and e-Business Activity in 2006*, European Commission, Sector Report No 9/2006.
4. **e-Business W@tch (2007).** *The European e-Business ó A Portrait of e-Business in 10 Sectors of the EU Economy ó 5th Synthesis Report of the e-Business W@tch*, European Commission, Report 2006/07 edition.

5. **e-Business W@tch (2007).** *The European e-Business ó A Portrait of e-Business in 10 Sectors of the EU Economy ó 3rd Synthesis Report*, European Commission ó Enterprise Directorate General, Report 2004 edition.
6. **Global Technology Centre ó Health Research Institute (2005).** *Reactive to Adaptive ó Transforming Hospitals with Digital Technology*, PriceWaterhouseCoopers.
7. **The European e-Business Market Watch (2004).** *Electronic Business in the Health and Social Services Sector ó Key Issues, Case Studies, Conclusions*, European Commission ó Enterprise Publications, Sector Report No 10-11.
8. **The Robert Wood Johnson Foundation (2001).** *The eHealth Landscape ó A Terrain Map of Emerging Information and Communication Technologies in Health and Health Care*, New Jersey: The Robert Wood Johnson Foundation.

-
1. <http://europa.eu>
 2. www.100tophospitals.com
 3. www.consumerwebwatch.org
 4. www.conta.uom.gr
 5. www.disabled.gr
 6. www.discern.org.uk
 7. www.forthnet.gr
 8. www.haworthpress.com
 9. www.healthgrades.com
 10. www.hi-europe.info
 11. www.hon.ch
 12. www.mohaw.gr
 13. www.ncsl.org
 14. www.nnyhealthweb.org
 15. www.pathfinder.gr
 16. www.pwc.com

17. www.quick.org.uk
18. www.remakingamericanmedicine.org
19. www.strategic.gr
20. www.webaward.org

ΠΑΡΑΡΤΗΜΑ

1

1 ()					
/		web-site	e-mail		
1	" "	www.hospital-elena.gr	elphr@otenet.gr		'
2	" "	www.spiliopoulio.gr	info@spiliopoulio.gr		'
3	" "	www.agsavvas-hosp.gr	grammateia@agsavvas-hosp.gr		'
4	" "	www.elpis.gr	director@elpis.gr		'
5	" "	www.evangelismos-hosp.gr	info@evangelismos-hosp.gr		'
6	" "		proed@hosp-alexandra.gr		'
7	" "	www.hippokratio.gr	info@ippokratio.gr		'
8	" " . . .	www.korgialeneio-benakeio.gr	info@korgialenio-benakio.gr		'
9	" "	www.laiko.gr	dioikisi@laiko.gr		'
10	" "	www.surgery.gr	webmaster@surgery.gr		'
11	" "		pliroforiki@polykliniki.gr		'
12	" .& . "	www.aglaiakyriakou.gr	tmplhr@aglaiakyriakou.gr		'
13	" "		nosopam@athserv.otenet.gr		'
14	" "	www.paidon-agiasofia.gr	gram@paidon-agiasofia.gr		'
15			nospat@otenet.gr		'
16	-				'
17	-	www.aretaielio.uoa.gr			'
18	" "	www.ophthalmiatreio.gr	gramm@ophthalmiatreio.gr		'
19	" "	www.syggros-hosp.gr	hsyggrou@otenet.gr		'
20		www.onasseio.gr	mikep@ocsc.gr		'
21	" "	www.euroclinic.gr	athinaiki@euroclinic.gr		'
22	" "				'
23	" "		attiko@otenet.gr		'
24	" "				'
25	"EUROMEDICA"	www.euromedica.gr	grammatia@euromedica.gr		'
26	-	www.iatriko.gr	info@iatriko.gr		'
27	" "	www.lefkosstavros.gr	info@lefkosstavros.gr		'
28	" "				'
29	" "				'
30	" "	www.kyanousstavros.gr	info@kyanousstavros.gr		'
31			agclinic@otenet.gr		'
32					'
33		www.euroclinic.gr	services@euroclinic.gr		'
34		www.euroclinic.gr	paidon@euroclinic.gr		'
35					'
36					'
37		www.centralclinic.gr	ccaa@centralclinic.gr		'
38	" "				'
39	" "				'

40	" "				'
41	" "	www.bioiatriki.gr	marketing@bioiatriki.gr		'
42	" "	www.evagelistria.com	info@evagelistria.com		'
43	" "				'
44	" "				'
45	" "				'
46	" "				'
47	" "				'
48	" "				'
49	" "	www.dunant.gr			'
50	" "	www.pediatrics-uoa.edu.gr			'
51					'
52	" "	www.sismanoglio.gr	info@sismanoglio.gr		'
53	" / "	www.agiaolga.gr	agiaolga@otenet.gr		'
54	" "	www.sotiria.gr	sotiria2@otenet.gr		'
55	" "		gonkhosp@otenet.gr		'
56	" "	www.asklepieio.gr	proedros@asklepieio.gr		'
57	" "	www.gna-gennimatas.gr	info@gna-gennimatas.gr		'
58	" "	www.kat-hosp.gr	edp1@kat-hosp.gr		'
59	" "				'
60			paidwnpe@otenet.gr		'
61			daou@hol.gr		'
62		www.autismhells.gr	info@autismhellas.gr		'
63	METROPOLITAN HOSPITAL	www.metropolitan-hospital.gr	info@metropolitan-hospital.gr		'
64					'
65	" "				'
66	" "				'
67	"-"MEDITERRANEO"	www.mediterraneohospital.gr	info@mediterraneohospital.gr		'
68	" "	www.hygeia.gr	info@hygeia.gr		'
69	" "		therapes@otenet.gr		'
70	" "		therapy@otenet.gr		'
71					'
72		www.iatriko.gr	info@iatriko.gr		'
73	-	www.iatriko.gr	p.faliro@iatriko.gr		'
74	-	www.iatriko.gr			'
75	- " "	www.iaso.gr	pds.ira@iaso.gr		'
76	" "				'
77	" "	www.iatriko.gr			'
78	" "				'
79	" "		galene@panafonnet.gr		'
80	" "		lyrakou@hol.gr		'
81	" "	www.letto.gr	info@letto.gr		'
82	" "	www.iaso.gr	iasoh@hellasnet.gr		'
83	" "	www.mitera.gr	info@mitera.gr		'
84	INTERDENT	www.interdent.gr	gerpap@interdent.gr		'
85	" "				'

86	" "				'
87	" "				'
88	" "				'
89	" "				'
90					'

2

2 & ()					
/		web-site	e-mail		
1	" "		ngndat@otenet.gr		'
2	" "	www.thriassio-hosp.gr	thrhosp@otenet.gr		'
3	" "	www.nikaia-hosp.gr	info@nikaia-hosp.gr		'
4	" "	www.tzaneio.gr	hospital@tzaneio.gr		'
5	" "	www.metaxa-hospital.gr	director@metaxa-hospital.gr		'
6					'
7	" "				'
8	" "		pgndax1@otenet.gr		'
9		www.psyhat.gr	ptmopl@internet.gr		'
10	" "		dromokat@otenet.gr		'
11	" "		medweb@otenet.gr		'
12	" "				'
13	" "				'
14	" "				'
15	" "				'
16	" "				'
17	" "	www.bioiatriki.gr	marketing@bioiatriki.gr		'
18	" "				'
19	" "	www.agiafotini-clinic.gr	info@agia-fotiniclinic.gr		'
20	" "				'
21	" "				'
22	" "				'
23	" "				'
24	" "		v_clinic@panafon.gr		'
25	" " "IASIS"				'
26	" "				'
27	" "				'
28	" "		merimna@otenet.gr		'
29	" "				'
30	" "	www.vostanio.gr	bostanio@otenet.gr		'
31	" "		hospsam@otenet.gr		'
32	" "	www.xioshosp.gr	xioshosp@otenet.gr		'
33	" "	www.limnoshospital.gr	info@limnoshospital.gr		'
34	" "				'
35	" "				'
36	" "				'
37	" "	www.vardakeio.gr	vardakio@otenet.gr		'
38	" "	www.rhodes-hospital.gr	info@rhodes-hospital.gr		'
39	" "				'

3

3 ()					
/		web-site	e-mail		
1	" "		theagen@otenet.gr		.
2	" "	www.agpavlos.gr	info@agpavlos.gr		.
3	" "	www.ippokratio.gr	info@ippokratio.gr		.
4			hospkilk@otenet.gr		.
5		www.hospser.gr	gnserres@hospser.gr		.
6			gnnh@otenet.gr		.
7	&	www.nadn.gr	nadn@otenet.gr		.
8		www.ahepahosp.gr			.
9	" "	www.klinikiagiouloukas.gr	info@klinikiagiouloukas.gr		.
10	" "				.
11	" "		galinos2@otenet.gr		.
12	" "				.
13	" -EUROMEDICA"	www.euromedica.gr	info@euromedica.gr		.
14	" "				.
15		www.genikikliniki.gr	info@genikikliniki.gr		.
16		www.iatriko.gr	info@interbalkan-hosp.gr		.
17	" "				.
18	" "				.
19					.
20	" "				.
21	" "		agefism@internet.gr		.
22	" 12 "				.
23	" - "				.
24	" EUROMEDICA"	www.euromedica.gr	info@euromedica.gr		.
25	" "				.
26	" "				.
27	" "	www.stasinopoulos.gr	info@stasinopoulos.gr		.
28	" "				.
29	" "				.
30	" "				.
31	" "				.
32	-	www.iakentro.gr			.
33			nos@grevenanet.gr		.
34		www.kastoriahospital.gr	kasthosp@otenet.gr		.
35	" "	www.mamatsio.gr	noskoz@otenet.gr		.
36	" "	www.mpodosakeio.gr	ghptmp@otenet.gr		.
37	" "		hos-flo@otenet.gr		.
38	" "	www.euromedica.gr	info@euromedica.gr		.
39	EUROMEDICA "	www.euromedica.gr	info@euromedica.gr		.
40	- " "				.

41	" "				
42	- " "				
43	" "				
44	-				

4 & ()					
/		web-site	e-mail		
1		www.verhospi.gr	verhospi@vemet.gr		.
2		www.gng.gr	ngng@otenet.gr		.
3			hospedes@waternet.gr		.
4	()	www.surgedes.gr			.
5	" "		hospgeni@otenet.gr		.
6	" "	www.gpapanikolaou.gr	info.gpapanikolaou@n3.syzefxis.gov.gr		.
7	" "		librad@otenet.gr		.
8	" "	www.papageorgiou-hospital.gr	info@papageorgiou-hospital.gr		.
9	N " "	www.nephrology.gr	info@nephrology.gr		.
10					.
11			gnnaussa@nao.forthnet.gr		.
12			nep13@otenet.gr		.
13	()	www.psychotes.gr	info@psychotes.gr		.
14		www.psynpo.gr	info@psynpo.gr		.
15	- " "	www.kliniki-veliki.gr	kliniki-veliki@kat.forthnet.gr		.
16	" "				.
17	" "				.
18	" "				.
19	" "				.
20	" "				.
21	" "				.
22	" "		nyras@otenet.gr		.
23	" "				.
24	" "	www.urology.gr	izoumpos@yahoo.gr		.
25	" "	www.did-hosp.gr	did-hosp@otenet.gr		.
26	" "	www.dramahospital.gr	info@dramahospital.gr		.
27	" "	www.kalahospital.gr	ngnk@kav.forthnet.gr		.
28	" "	www.renalkomotini.gr			.
29	" "	www.hosp-xanthi.gr	contact_us@hosp-xanthi.gr		.
30	" "	www.pgna.gr	gpnagp@otenet.gr		.
31	" "				.
32	" "				.
33	" "				.
34	" "				.
35	" "		cliniki@otenet.gr		.
36	" "				.
37	" "				.
38	" "				.
39	" "				.

5 () &					
/		web-site	e-mail		
1	" "	www.volos-hospital.gr	info@volos-hospital.gr		
2			gnnkard@otenet.gr		
3	" & "	www.larissahospital.gr	pgnlaris@otenet.gr		
4			gnntrika@otenet.gr		
5		www.uhl.gr	ppgnl@otenet.gr		
6	" "				
7	" "				
8	" "				
9	" - "				
10	" "				
11	" "				
12	" "				
13					
14	" "				
15	" "	www.agiafotini-clinic.gr	info@agiafotini-clinic.gr		
16	" "				
17	" "				
18	" "				
19	" "				
20	" - "				
21	" "		asklipvol@argo.net.gr		
22	" "				
23	" "				
24	"HOME CARE"				
25					
26	- " "				
27	" "				
28	" "				
29	" "				
30	" "				
31	" "				
32	" "				
33	" & "		ntinascli@otenet.gr		
34	" - "		stoforos@otenet.gr		
35	" "				
36	" "				
37	" "				
38	" "				
39	" "				

40	" "				
41			gnamfis@otenet.gr		
42			gnthiva@otenet.gr		
43			gnk100@otenet.gr		
44			hosplam@otenet.gr		
45			levadiahospital@internet.gr		
46			noschalk@otenet.gr		
47	" "				
48	" "				
49	" "				
50	" "				
51	-				
52	- " "				
53	" "				
54	" "				
55		www.polyclinic.gr	georgoulas@polyclinic.gr		

6

6					
& (') ,					
/		web-site	e-mail		
1			ngnargos@otenet.gr		
2			gnnkalm@otenet.gr		
3			gnnk@internet.gr		
4			ngnnapl@otenet.gr		
5		www.hospspa.gr	hospspa@otenet.gr		
6	" "	www.panarkadiko.gr	info@panarkadiko.gr		
7			pnt@aiaa.gr		
8	" " "				
9	" " "				
10	" "				
11	" " "				
12	" " "				
13					
14	" "				
15			gna@art.forthnet.gr		
16	" "	www.gni-hatzikosta.gr	xatztp@otenet.gr		
17		www.prevezahospital.gr	info@prevezahospital.gr		
18		www.uhi.gr	ppnids@otenet.gr		
19	" "				
20	" " "				
21	" "				
22	" "				
23	" "		gnnzsd@otenet.gr		
24			manager@corfuhospital.gr		
25			gnnkaf@otenet.gr		
26			hoslef@otenet.gr		
27	" "		hos-mantz@aiaa.gr		
28		www.psynk.ondsl.gr	psynk@otenet.gr		
29		www.corfugeneralclinic.gr	info@corfugeneralclinic.gr		
30			gnagrpr@otenet.gr		
31		www.gnaigio.gr	info@gnaigio.gr		
32			gnnamal@otenet.gr		
33	" "		hospitalp@mesforthnet.gr		
34	" "		gnckaram@otenet.gr		
35	" "	www.agandreashosp.gr	info@agandreashosp.gr		
36	" "		nosokprg@otenet.gr		
37			thoraxpa@internet.gr		
38		www.pgnp.gr	tserem@med.upatras.gr		
39		& www.med.upatras.gr	secretary@med.upatras.gr		

40		www.orthopatras.gr	lambiris@med.upatras.gr		
41		www.filoxenia-dialysis.gr	info@filoxenia-dialysis.gr		
42	" "				
43	" "				
44	" "				
45	" "				
46	" "				
47					
48	" "				
49	" "				
50	" "				
51	" "				
52	" "				
53	" "				
54	" "				

7

7 ()					
/		web-site	e-mail		
1	" "		tpghagn@hygeianet.gr		
2	-" - "	www.venizeleio.gr	veniz2hygeianet.gr		
3			rethhospital@hygeianet.gr		
4	" "	www.chaniahospital.gr	info@chaniahospital.gr		
5		www.psycrete.gr	dioikitis@psycrete.gr		
6		www.papagnh.gr	smirlis@papagnh.gr		
7	- -	www.urology.edu.gr			
8	www.bemmo.gr	veic@med.uoc.gr		
9	" "				
10	" "		aliferis@aiaa.gr		
11	" "		ageorgec@otenet.gr		
12	" "				
13	" "				
14	" "				
15	" "				
16	" "				
17	" " - / .& .				